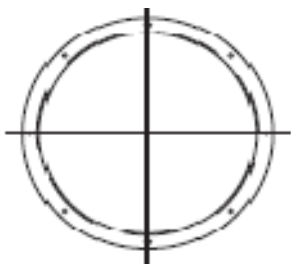


AcoustaFoil/PLR FLANGE DIMENSIONS

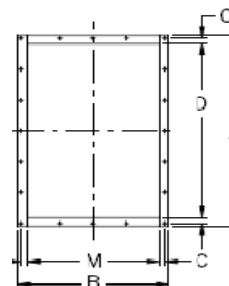


Flange Inlet Dimensions

Size	ID	BC	OD	Holes	
				Number	Diameter
80	88 5/8	90 7/8	92 5/8	32	9/16
89	97 5/8	99 7/8	101 5/8		

Holes furnished on vertical centerline.

Tolerance: ± 1/32



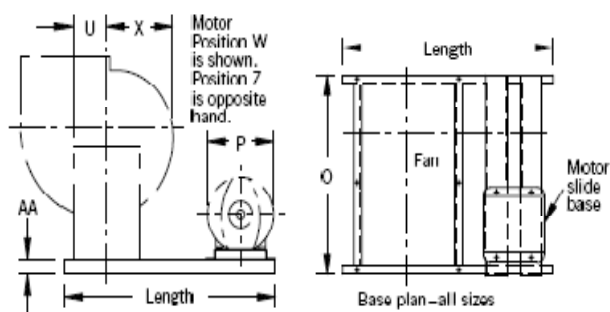
Flange Outlet Dimensions

1. Flange face mounted flush with outside edge of housing discharge.
2. Holes furnished on 4" centers from centerlines.

Size	A	B	C	D	M	Holes		
						Sides	Top/Bottom	Diameter
80	94	64 3/4	1 1/8	90	60 3/4	23	15	9/16
89	103	70 7/8		99	66 7/8	25	17	

Tolerance: ± 1/32

UNITARY BASE DIMENSIONS



Approximate base length = $U + X + P + 16$

- U = from fan base dimension drawing.
- X = dimension from fan centerline to edge of scroll nearest motor. Dimensions varies with discharge and motor position.
- P = diameter of motor from table below.
- 16 = constant – allows for motor clearance.

NOTE: These dimensions are only approximate. Exact dimensions furnished after order is placed.

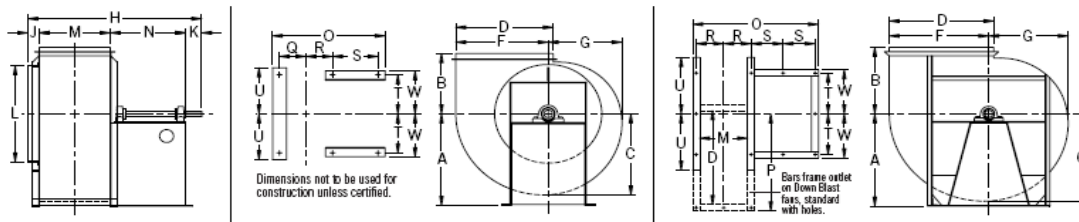
Size	AA	O		
		Class 1	Class 2	Class 3
80	8	109 3/8	124 3/8	127 3/8
89		119 1/2	136 1/2	139 1/2

Tolerance: ± 1/32

Structural-steel channel base provides a factory designed package of Arrangement 1 or 3 fan, motor, drive, and guard. Also available with rubber-in-shear or spring isolation. Built-in motor rails provide for adjustment of belt tension. Unitary base is also available for Arrangement 7 and 8 fans.

AcoustaFoil/PLR

DIMENSIONS



Class I & II, Arrangement 1

Size	A				B		C	D	F	G	H	
	TH/TAD	BH/BAU	UB/TAU	DB	*	TAD					Class 1	Class 2
80	71	89	84	57	57	82	81 11/16	90	85 11/16	68 3/8	120 1/4	135 1/4
89	78	98	92 1/2	63	63	88	90 1/8	99	94 1/2	75 7/16	130 7/8	147 7/8

Size	J	K	L	M	N		O		P	R	S	
					Class 1	Class 2	Class 1	Class 2			Class 1	Class 2
80	7	10 1/2	89 1/2	60 3/4	42	57	112 3/8	127 3/8	88 1/4	32 7/8	20 13/16	28 5/16
89		11	98 1/2	66 7/8	46	63	122 1/2	139 1/2	97	35 15/16	22 13/16	31 5/16

Size	T	U	W	a	b		c	d	Base Holes
					BAU/TAU	TAD			
80	36 3/4	50	39 1/4	76 1/8	101	118 5/8	84 1/2	61	1
89	40 1/4	54 7/8	42 3/4	84	118 3/8	129	93 1/4	67 1/4	

* For TH, BH, UB, DB, BAU and TAU discharge. J is from housing side over inlet collar. L, M, and D are outside dimensions. Tolerance: ±1/4"

Class III, Arrangement 1 & 8

Size	A				B		C	D	F	G	H	J
	TH/TAD	BH/BAU	UB/TAU	DB	*	TAD						
80	71	89	84	57	57	82	81 11/16	90	85 11/16	68 3/8	138 3/4	7
89	78	98	92 1/2	63	63	88	90 1/8	99	94 1/2	75 7/16	151 3/8	

Size	K	L	M	N	O	P	R	S	T	U	W	a
80	11	89 1/2	60 3/4	60	130 3/8	88 1/4	32 7/8	29 13/16	36 3/4	50	39 1/4	76 1/8
89	11 1/2	98 1/2	66 7/8	66	142 1/2	97	35 15/16	32 13/16	40 1/4	54 7/8	42 3/4	84

Size	b		c	d	Base Holes
	BAU/TAU	TAD			
80	101	118 5/8	84 1/2	61	1
89	118 3/8	129	93 1/4	67 1/4	

* For TH, BH, UB, DB, BAU and TAU discharge. J is from housing side over inlet collar. L, M, and D are outside dimensions. Tolerance: ±1/4"

Class IV, Arrangement 8

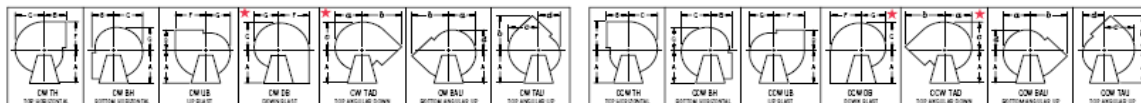
Size	A				B		C	D	F	G	H	J
	TH/TAD	BH/BAU	UB/TAU	DB	*	TAD						
80	71	89	84	57	57	82	81 11/16	90	85 11/16	68 3/8	139 1/4	7
89	78	98	92 1/2	63	63	88	90 1/8	99	94 1/2	75 7/16	151 7/8	

Size	K	L	M	N	O	P	R	S	T	U	W	a
80	11 1/2	89 1/2	60 3/4	60	130 3/8	88 1/4	32 7/8	29 13/16	36 3/4	50	39 1/4	76 1/8
89	12	98 1/2	66 7/8	66	142 1/2	97	35 15/16	32 13/16	40 1/4	54 7/8	42 3/4	84

Size	b		c	d	Base Holes
	BAU/TAU	TAD			
80	101	118 5/8	84 1/2	61	1
89	118 3/8	129	93 1/4	67 1/4	

* For TH, BH, UB, DB, BAU and TAU discharge. J is from housing side over inlet collar. L, M, and D are outside dimensions. Tolerance: ±1/4"

FAN DISCHARGES – VIEWED FROM DRIVE SIDE

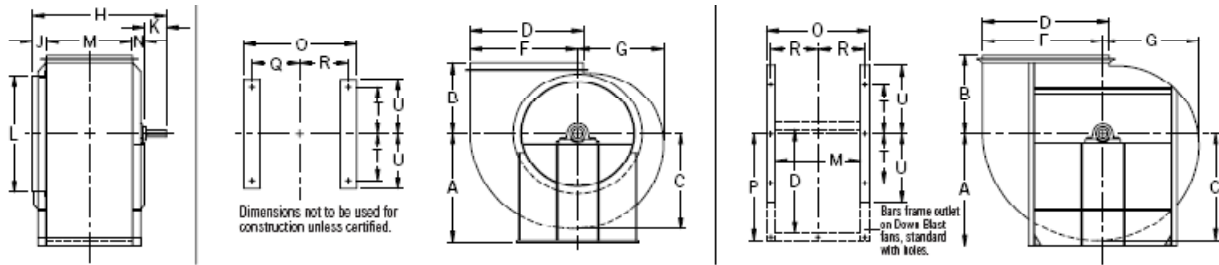


Clockwise—angular discharges at 45°

Counterclockwise—angular discharges at 45°

* Down Blast and Top Angular Down discharge positions must be evaluated for clearance of accessories such as flanged outlet, outlet damper, unitary base, etc. Consult nyb with specific details.

AcoustaFoil/PLR DIMENSIONS



Class I & II, Arrangement 3 / Class III, Arrangement 3 & 7

Size	A			DB	B		C	D	F	G
	TH/TAD	BH/BAU	UB/TAU		*	TAD				
80	71	89	84	57	57	82	81 11/16	90	85 11/16	68 3/8
89	78	98	92 1/2	63	63	88	90 1/8	99	94 1/2	75 7/16

Size	H			J	K		L	M	N		
	Class 1	Class 2	Class 3		Class 1,2	Class 3			Class 1	Class 2	Class 3
80	87 1/4		88 3/4	9	10 1/2	11	89 1/2	60 3/4	7		8
89	93 7/8		95 3/8		11	11 1/2	98 1/2	66 7/8			

Size	O	P	R	T	U	a	b		c	d	Base Holes
							BAU/TAU	TAD			
80	70 3/4	88 1/4	32 7/8	36 3/4	50	76 1/8	101	118 5/8	84 1/2	61	1
89	76 7/8	97	35 15/16	40 1/4	54 7/8	84	118 3/8	129	93 1/4	67 1/4	

* For TH, BH, UB, DB, BAU and TAU discharge. J is from housing side over inlet collar. L, M, and D are outside dimensions. Tolerance: ±1/16"

Class IV, Arrangement 7

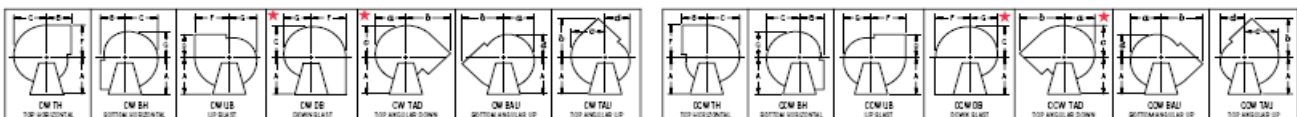
Size	A				B		C	D	F	G	H
	TH/TAD	BH/BAU	UB/TAU	DB	*	TAD					
80	71	89	84	57	57	82	81 11/16	90	85 11/16	68 3/8	141 1/4
89	78	98	92 1/2	63	63	88	90 1/8	99	94 1/2	75 7/16	153 7/8

Size	J	K	L	M	N	O	P	R	T	U	a
89		12	98 1/2	66 7/8		76 7/8	97	35 15/16	40 1/4	54 7/8	84

Size	b		c	d	Base Holes
	BAU/TAU	TAD			
80	101	118 5/8	84 1/2	61	1
89	118 3/8	129	93 1/4	67 1/4	

* For TH, BH, UB, DB, BAU and TAU discharge. J is from housing side over inlet collar. L, M, and D are outside dimensions. Tolerance: ±1/16"

FAN DISCHARGES – VIEWED FROM DRIVE SIDE



Clockwise—angular discharges at 45°

Counterclockwise—angular discharges at 45°

★ Down Blast and Top Angular Down discharge positions must be evaluated for clearance of accessories such as flanged outlet, outlet damper, unitary base, etc. Consult nyb with specific details.