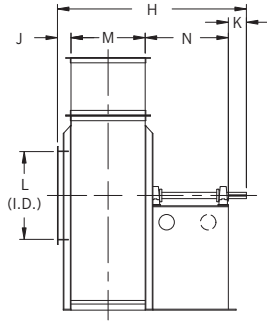


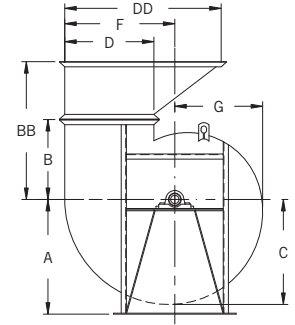
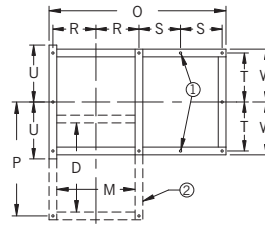




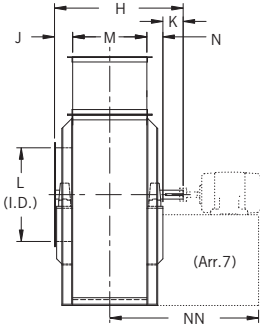
### ARRANGEMENT 1



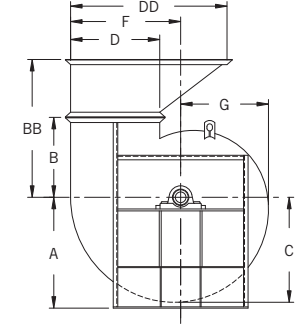
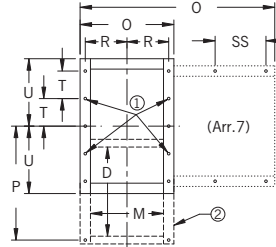
① Omitted on Models 245 through 335.



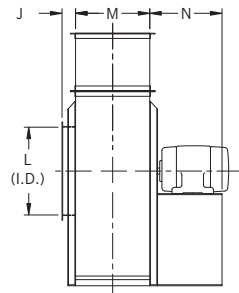
### ARRANGEMENTS 3/7



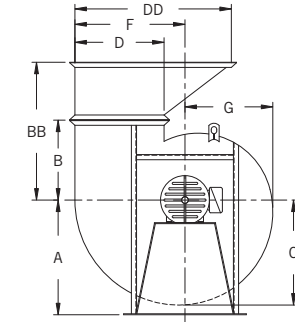
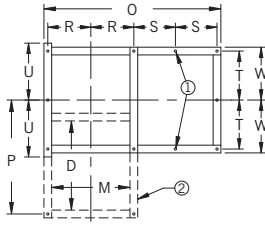
① Omitted on Models 245 through 495.



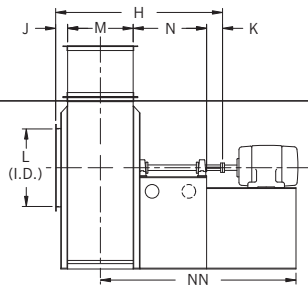
### ARRANGEMENT 4



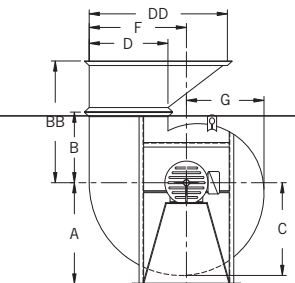
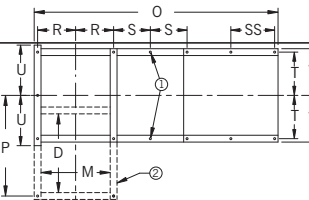
① Omitted on Models with motor frame 405 or smaller.



### ARRANGEMENT 8



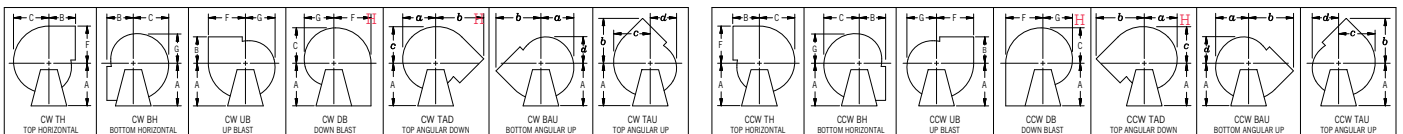
① Omitted on Models 245 through 335.



② Base bars form flanged outlet on Down Blast.

M, D, and DD are outside housing dimensions. J is from housing side over inlet. L is inside diameter.

### FAN DISCHARGES – VIEWED FROM DRIVE SIDE



Clockwise—angular discharges at 45°

Counterclockwise—angular discharges at 45°

H Down Blast and Top Angular Down discharge positions must be evaluated for clearance of accessories such as unitary base, outlet damper, evase, etc. Consult nyb with specific details.

The New York Blower Company has a policy of continuous product development and reserves the right to change designs and specifications without notice.